

Bayshore II

Inspiration Series

3,163-3,342 Square Feet | 4-6 Bedrooms
4-5 Baths | 3-Car Garage



Mediterranean B | FMD3



Tuscan A | TUS3



Coastal C | COA



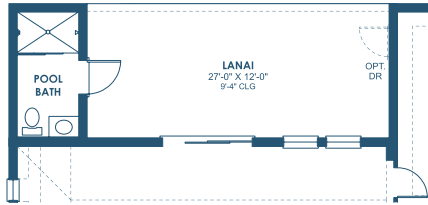
Modern Farmhouse | MFH10

Bayshore II

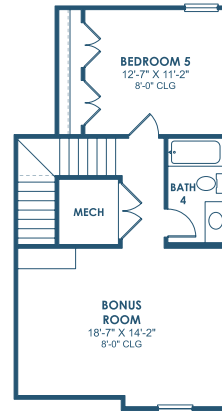
Inspiration Series

3,163-3,342 Square Feet | 4-6 Bedrooms

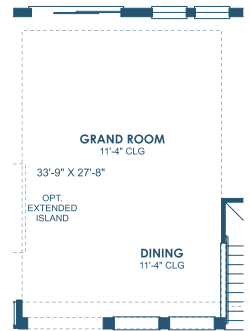
4-5 Baths | 3-Car Garage



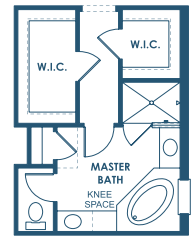
OPT. POOL BATH



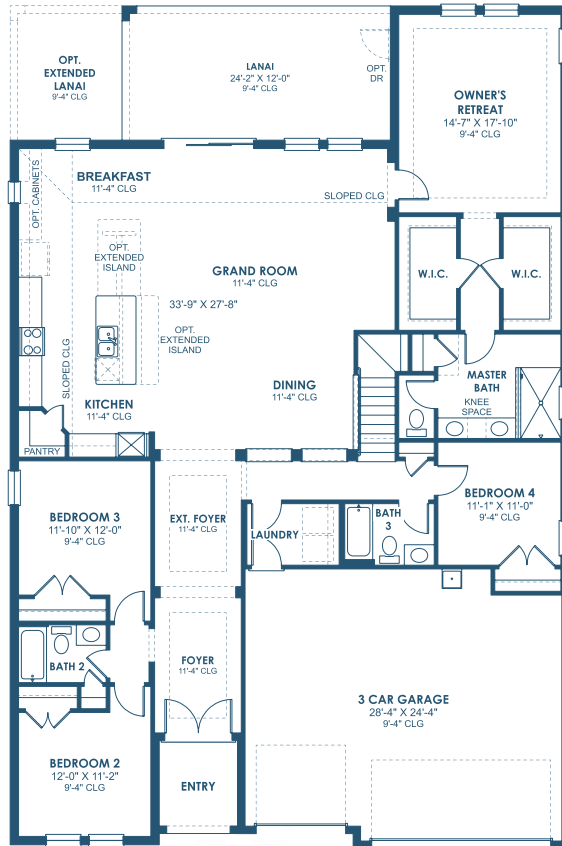
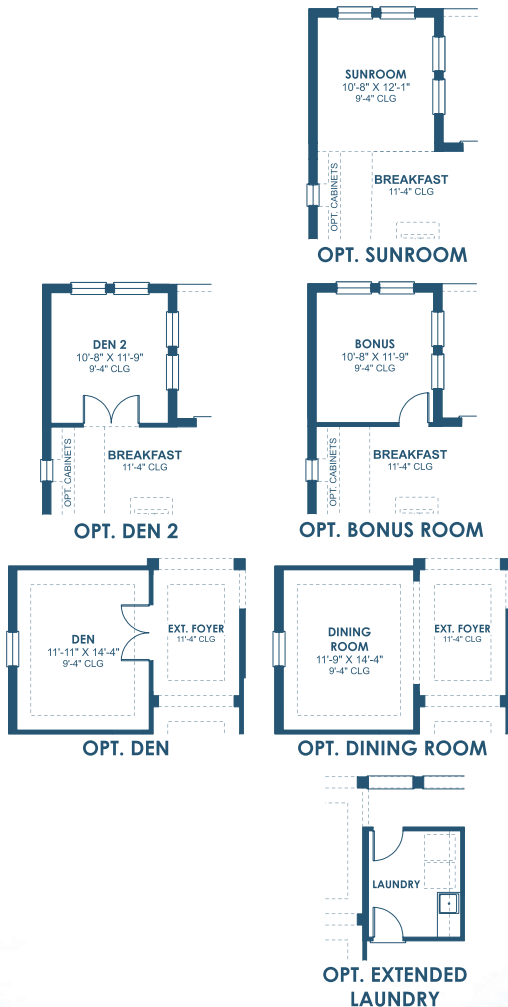
SECOND FLOOR



OPT. TRAY CEILING AT GRAND ROOM



OPT. MASTER BATH



MAIN FLOOR



homesbywestbay.com

*FRONT WINDOWS, ENTRY/PORCHES AND ROOM DIMENSIONS MAY VARY PER ELEVATION

*REFERENCE MASTER PLAN SETS FOR ACTUAL SQUARE FOOTAGE TOTALS AND ENTRY LAYOUTS

*Artist's conceptual rendering. Actual construction may vary in color, features and dimensions. Availability, specifications, and pricing are subject to change without notice. All plans require developer approval and may be modified in order to comply with these developer requirements. Please speak with a Homes by West Bay LLC, CRC Sales Manager for current information and about options where available. © 2025 Homes by West Bay LLC, CRC #057247. All rights reserved. Not an offer to purchase where prohibited by law. Broker Participation Welcome. 082724

SF50

