

Cedar Key I

Artisan Series

2,903-3,276 Square Feet | 3-4 Bedrooms

3 Baths | 3-Car Garage



Mediterranean A | FMD14



Tuscan A | TUS7



Modern | MOD6



Modern Farmhouse | MFH1



Coastal C | COA3



homesbywestbay.com

*FRONT WINDOWS, ENTRY/PORCHES AND ROOM DIMENSIONS MAY VARY PER ELEVATION
*REFERENCE MASTER PLAN SETS FOR ACTUAL SQUARE FOOTAGE TOTALS AND ENTRY LAYOUTS

*Artist's conceptual rendering. Actual construction may vary in color, features and dimensions. Availability, specifications, and pricing are subject to change without notice. All plans require developer approval and may be modified in order to comply with these developer requirements. Please speak with a Homes by West Bay Community Sales Manager for current information and about options where available. © 2025 Homes by West Bay LLC, CRC #057247. All rights reserved. Not an offer to purchase where prohibited by law. Broker Participation Welcome. 082724

SF50

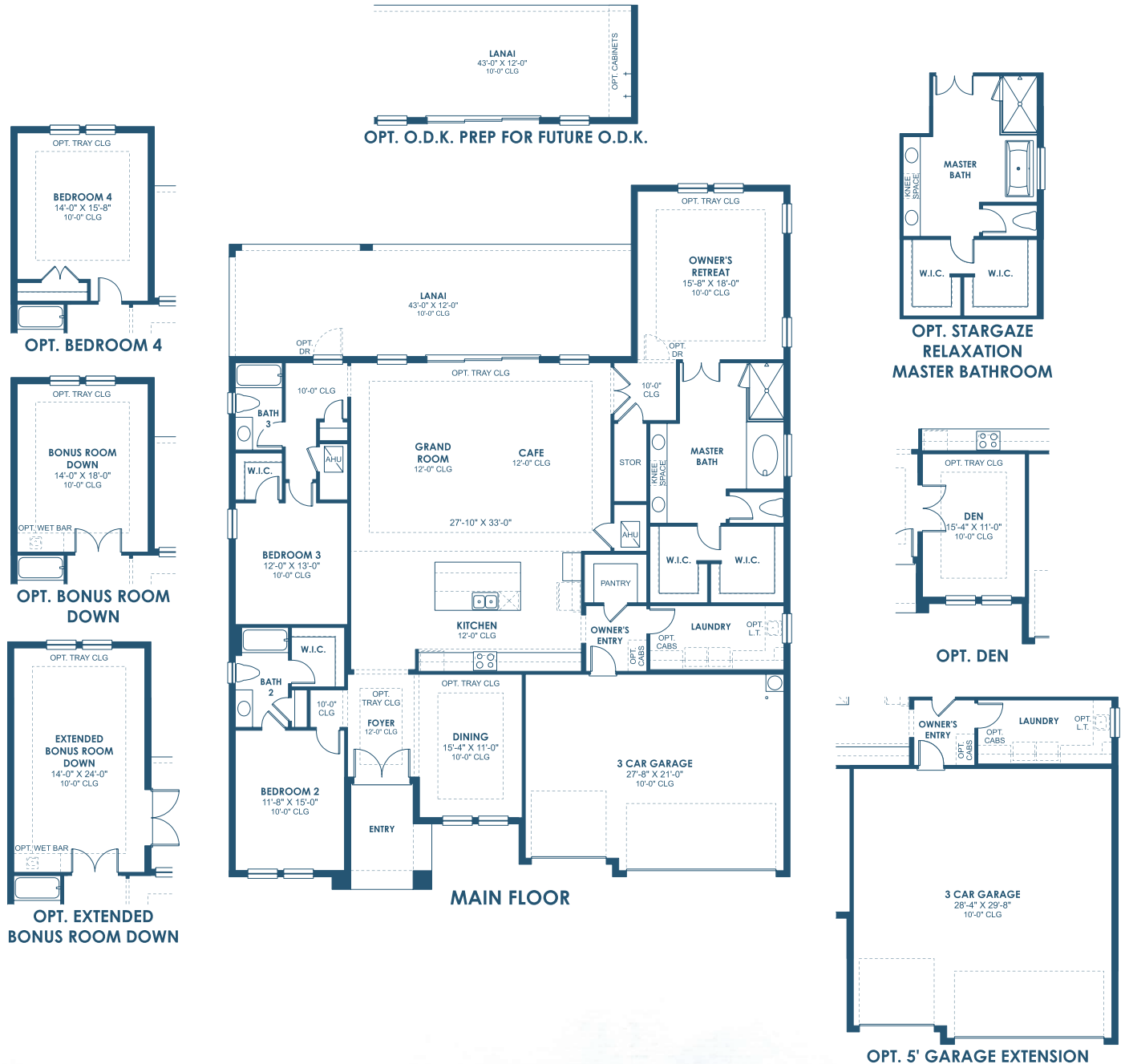


Cedar Key I

Artisan Series

2,903-3,276 Square Feet | 3-4 Bedrooms

3 Baths | 3-Car Garage



homesbywestbay.com

*FRONT WINDOWS, ENTRY/PORCHES AND ROOM DIMENSIONS MAY VARY PER ELEVATION
 *REFERENCE MASTER PLAN SETS FOR ACTUAL SQUARE FOOTAGE TOTALS AND ENTRY LAYOUTS

*Artist's conceptual rendering. Actual construction may vary in color, features and dimensions. Availability, specifications, and pricing are subject to change without notice. All plans require developer approval and may be modified in order to comply with these developer requirements. Please speak with a Homes by West Bay Community Sales Manager for current information and about options where available. © 2025 Homes by West Bay LLC, CRC #057247. All rights reserved. Not an offer to purchase where prohibited by law. Broker Participation Welcome. 082724

SF50

