

Madeira A

City Homes - South Tampa

4,582 Sq.Ft. | 5 Bedrooms
4.5 Baths | 3-Car Garage



Modern Farmhouse | Straight Stairs



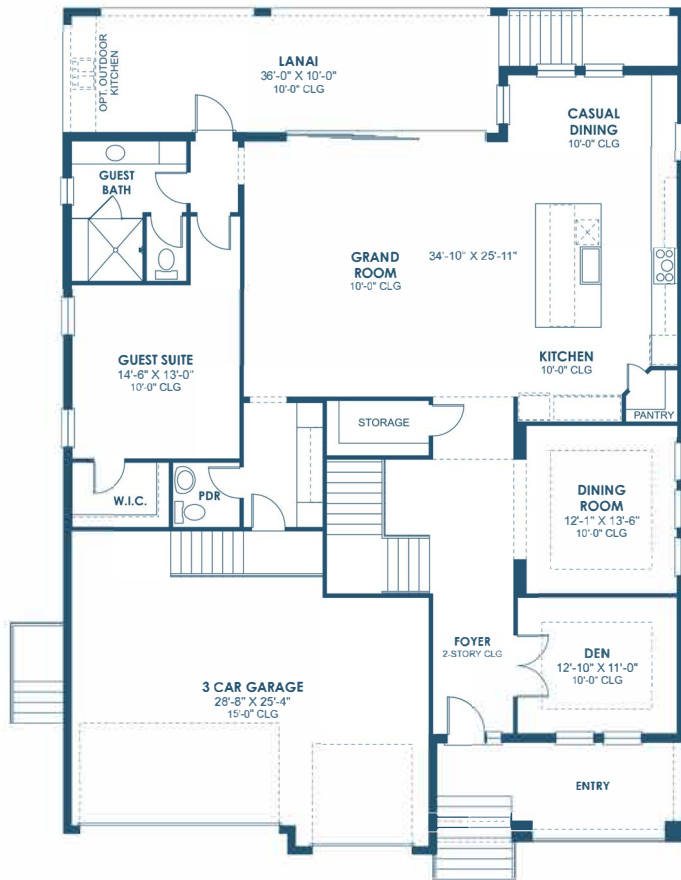
Contemporary | Straight Stairs

SF50

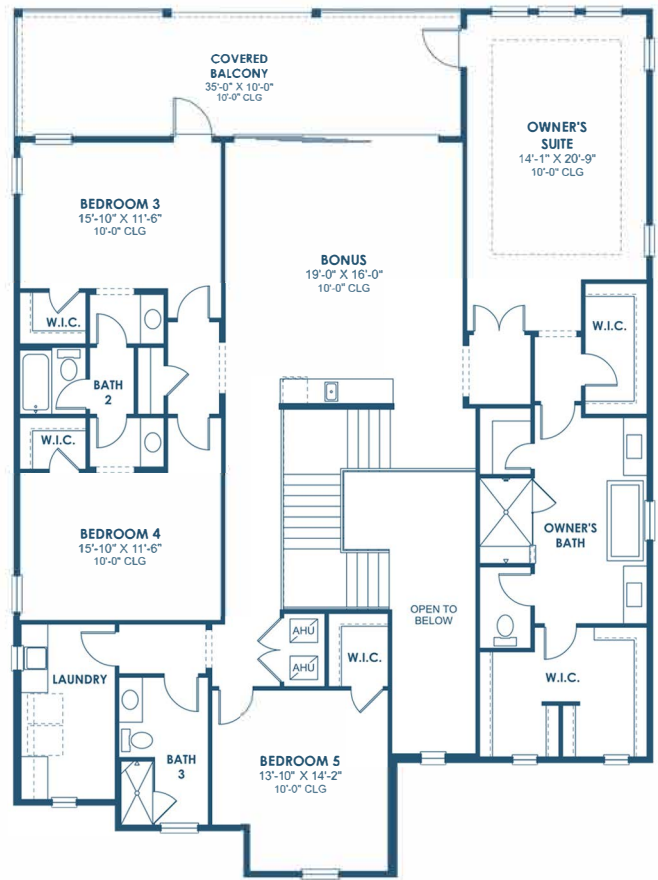
City Homes - South Tampa

4,582 Sq.Ft. | 5 Bedrooms

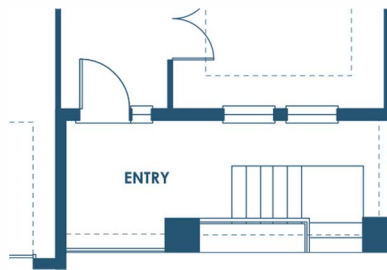
4.5 Baths | 3-Car Garage



MAIN FLOOR



SECOND FLOOR



OPT. TUCKED-IN FRONT STAIR

*PRELIMINARY PLANS

FRONT WINDOWS, ENTRY/PORCHES AND ROOM DIMENSIONS MAY VARY PER ELEVATION

REFERENCE MASTER PLAN SETS FOR ACTUAL SQUARE FOOTAGE TOTALS AND ENTRY LAYOUTS

*Artist's conceptual rendering. Actual construction may vary in color, features and dimensions. Availability, specifications, and pricing are subject to change without notice. All plans require developer approval and may be modified in order to comply with these developer requirements. Please speak with a Homes by WestBay Community Sales Manager for current information and about options where available. © 2024 Homes by West Bay LLC, CRC #057247. All rights reserved. Not an offer to purchase where prohibited by law. Broker Participation Welcome. 082724

SF50

CRC #057247