

# Cedar Key I

Artisan Series

2,903-3,276 Sq.Ft. | 3-4 Bedrooms  
3 Baths | 3-Car Garage



Mediterranean | FMD14



Tuscan | TUS7



Coastal C | COA3



Modern | MOD6

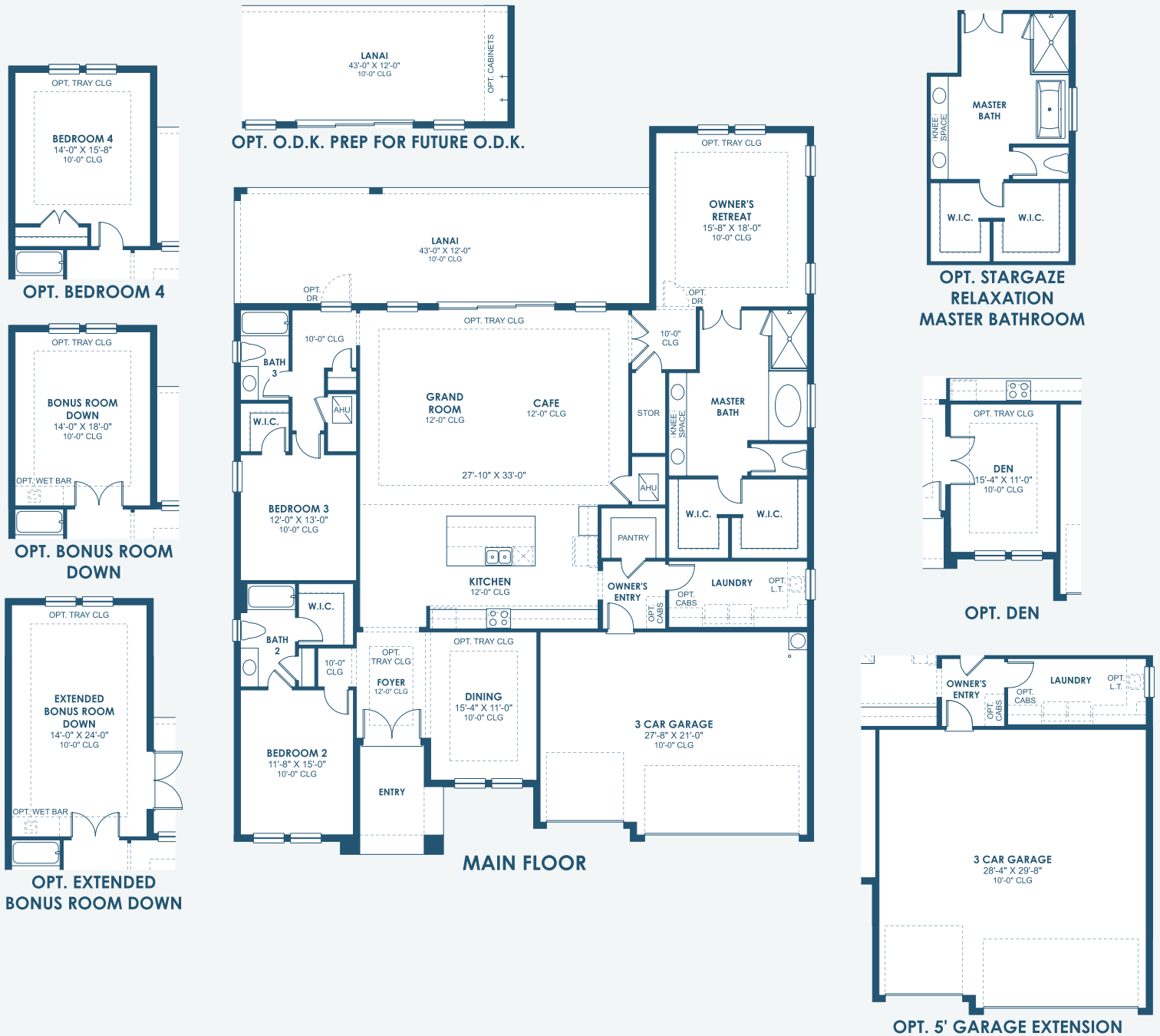


Modern Farmhouse | MFH1

# Cedar Key I

Artisan Series

2,903-3,276 Sq.Ft. | 3-4 Bedrooms  
3 Baths | 3-Car Garage



OPT. BEDROOM 4

OPT. BONUS ROOM DOWN

OPT. EXTENDED BONUS ROOM DOWN

OPT. STARGAZE RELAXATION MASTER BATHROOM

OPT. DEN

OPT. 5' GARAGE EXTENSION