

Granada II

Artisan Series

4,828-4,900 Sq.Ft. | 5 Bedrooms
4-6 Baths | 3-Car Garage



Mediterranean A | FMD5



European A | EUC4

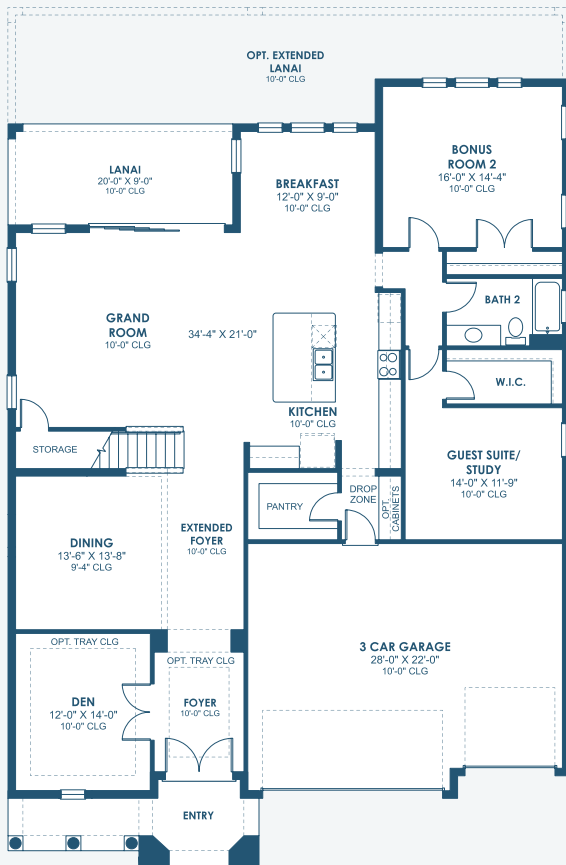


Tuscan A | TUS4

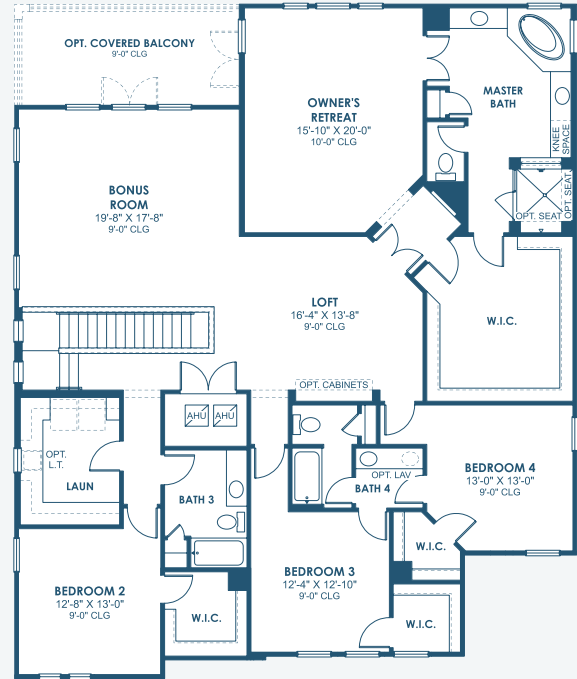
Granada II

Artisan Series

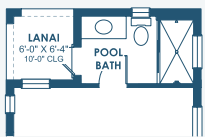
4,828-4,900 Sq.Ft. | 5 Bedrooms
4-6 Baths | 3-Car Garage



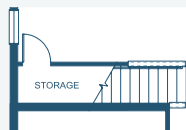
MAIN FLOOR



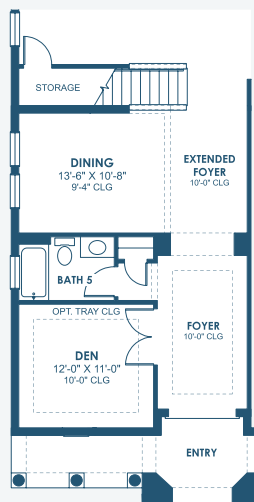
SECOND FLOOR



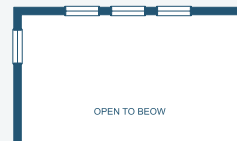
OPT. POOL BATH W/ LANAI



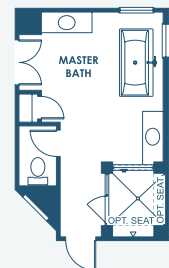
OPT. DEN 2



OPT. BATH 5



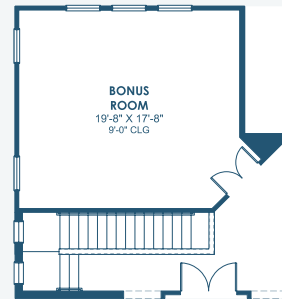
OPT. OPEN TO BELOW



OPT. STARGAZE RELAXATION M. BATH



OPT. O.D.K. PREP FOR FUTURE O.D.K.



OPT. BONUS ROOM



OPT. M. BATH W/ DELUXE SHOWER

FRONT WINDOWS, ENTRY/PORCHES AND ROOM DIMENSIONS MAY VARY PER ELEVATION
REFERENCE MASTER PLAN SETS FOR ACTUAL SQUARE FOOTAGE TOTALS AND ENTRY LAYOUTS

*Artist's conceptual rendering. Actual construction may vary in color, features and dimensions. Availability, specifications, and pricing are subject to change without notice. All plans require developer approval and may be modified in order to comply with these developer requirements. Please speak with a Homes by West Bay Community Sales Manager for current information and about options where available. © 2025 Homes by West Bay LLC, CRC #057247. All rights reserved. Not an offer to purchase where prohibited by law. Broker Participation Welcome. 022425