

Cedar Key II

Artisan Series

3,549-3,922 Sq.Ft. | 4-6 Bedrooms
4 Baths | 3-Car Garage



Mediterranean A | FMD6



European A | EUC7



Tuscan | TUS9

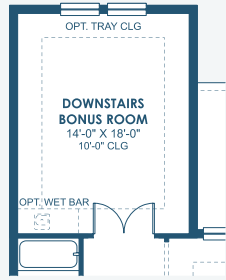
Cedar Key II

Artisan Series

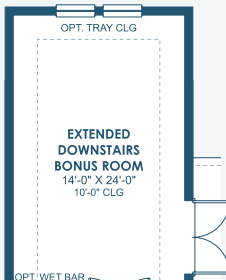
3,549-3,922 Sq.Ft. | 4-6 Bedrooms
4 Baths | 3-Car Garage



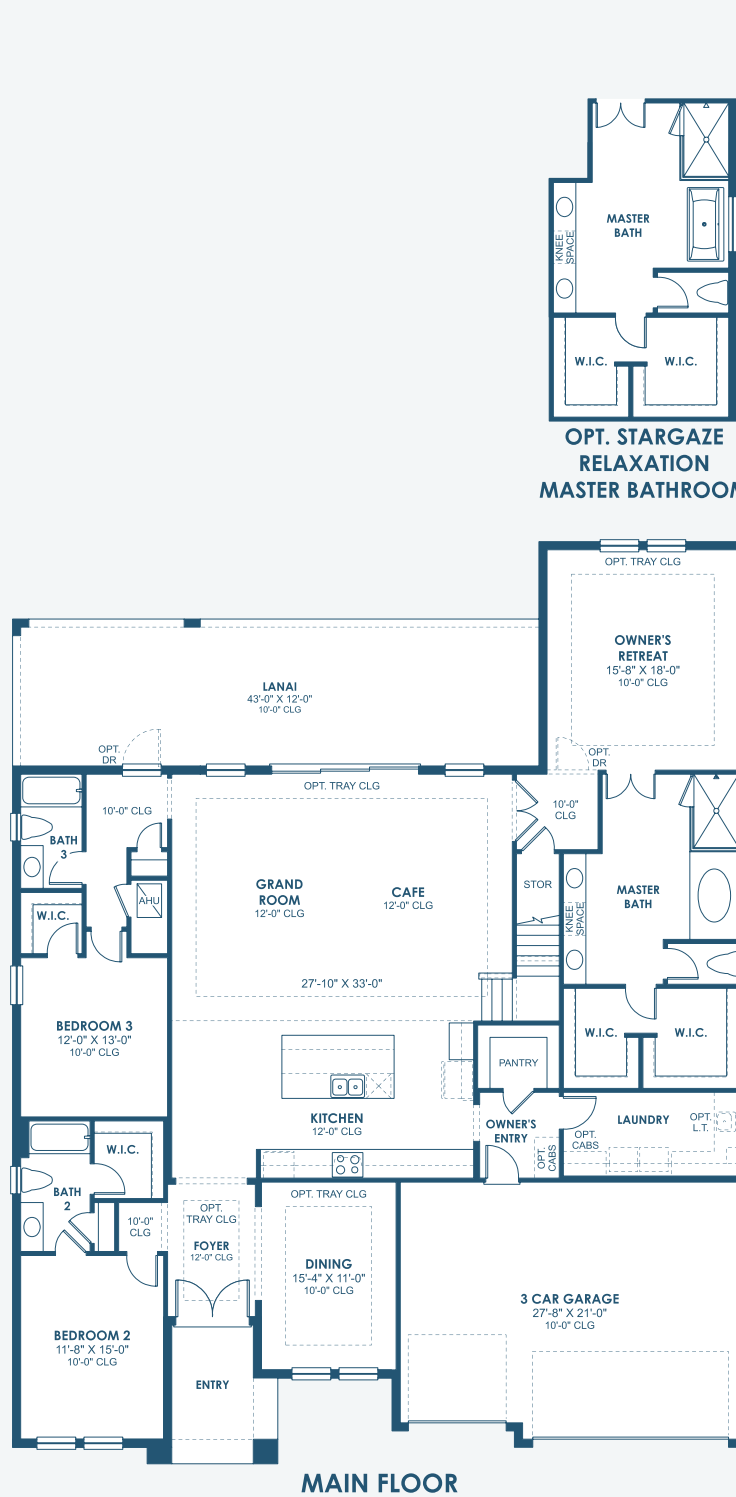
OPT. BEDROOM 5



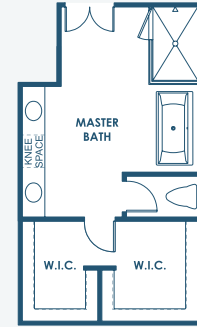
OPT. DOWNSTAIRS BONUS ROOM



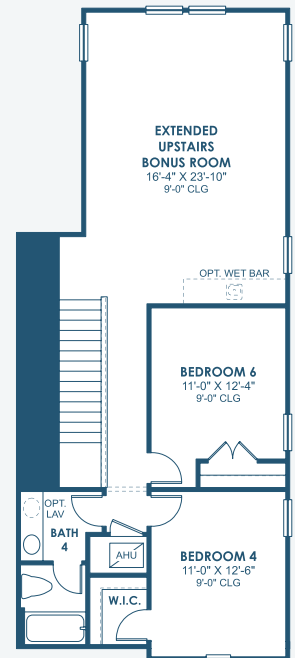
OPT. EXTENDED DOWNSTAIRS BONUS ROOM



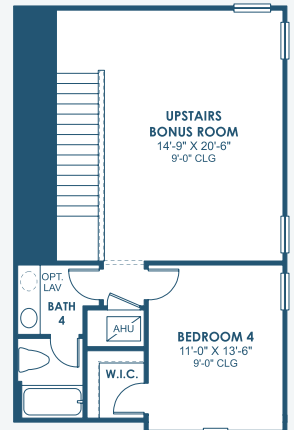
MAIN FLOOR



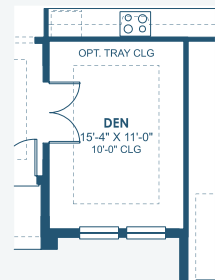
OPT. STARGAZE RELAXATION MASTER BATHROOM



OPT. EXTENDED UPSTAIRS BONUS ROOM



UPPER FLOOR



OPT. DEN