

Granada I

Artisan Series

4,828-4,900 Sq.Ft. | 5-7 Bedrooms
5-6 Baths | 3-Car Garage



Mediterranean | FMD2



Tuscan | TUS2



Coastal C | COA6



Modern | MOD2

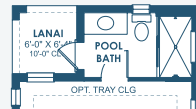


Modern Farmhouse | MFH2

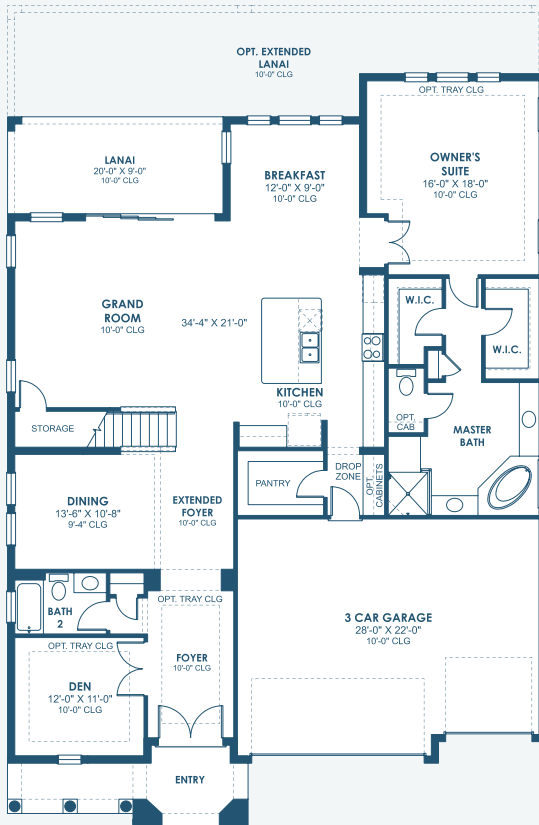
4,828-4,900 Sq.Ft. | 5-7 Bedrooms
5-6 Baths | 3-Car Garage



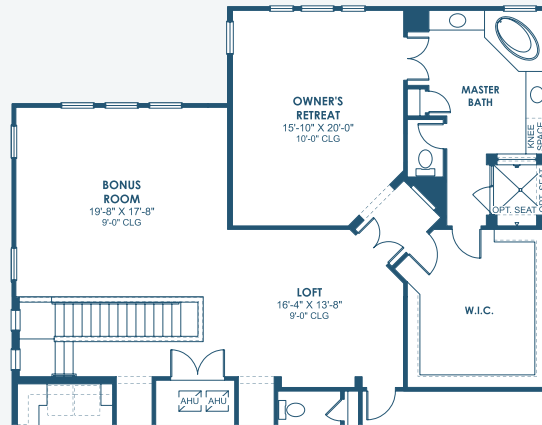
**OPT. O.D.K. PREP FOR
FUTURE O.D.K.**



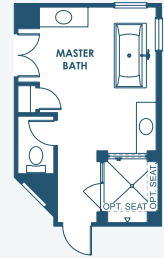
OPT. POOL BATH
W/ LANAI



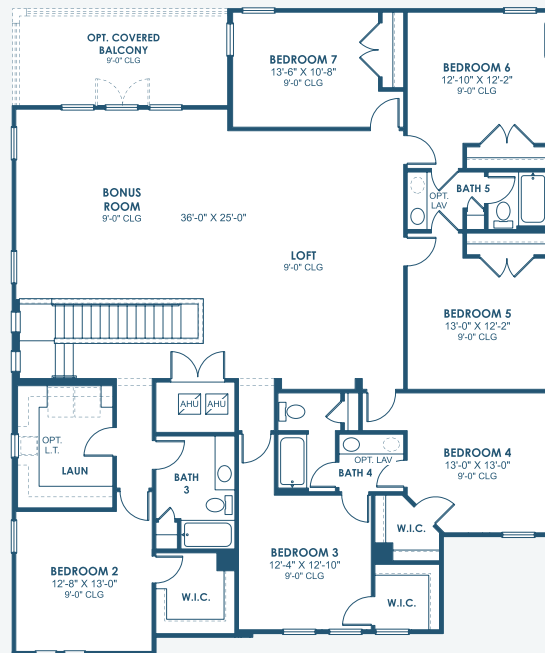
MAIN FLOOR



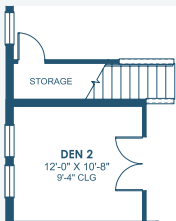
OPT. UPPER OWNER'S SUITE



OPT. UPPER OWNER'S SUITE
W/ STARGAZE
RELAXATION M. BATH



SECOND FLOOR



OPT. DEN 2



OPT. STARGAZE
RELAXATION
M. BATH



OPT. M. BATH W/
DELUXE SHOWER