

Key West II

Artisan Series

4,250-4,619 Sq.Ft. | 4-6 Bedrooms
3-5 Baths | 3-Car Garage



Mediterranean A | FMD14



Craftsman A | CRT3



European A | EUC2

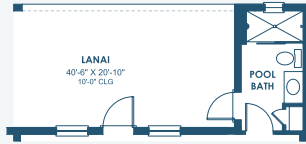


Tuscan A | TUS5

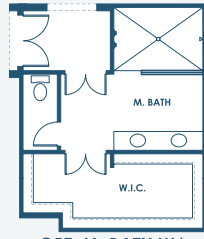
Key West II

Artisan Series

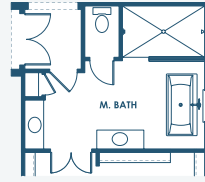
4,250-4,619 Sq.Ft. | 4-6 Bedrooms
3-5 Baths | 3-Car Garage



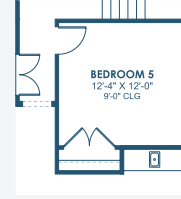
OPT. POOL BATH



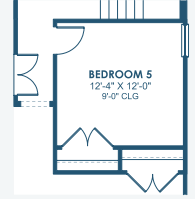
OPT. M. BATH W/
DELUXE SHOWER



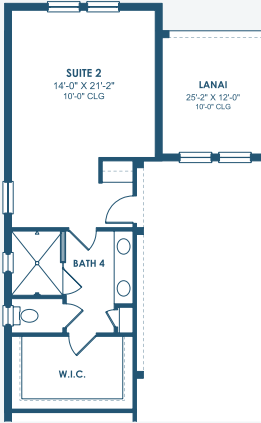
OPT. STARGAZE
RELAXATION M. BATH



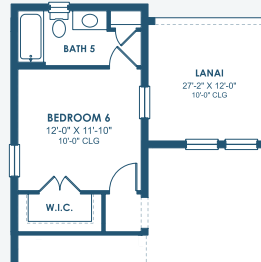
OPT. BEDROOM 5
W/ WET BAR



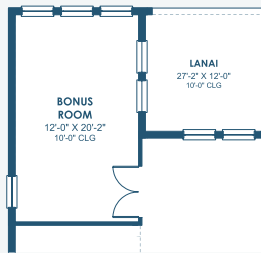
OPT. BEDROOM 5



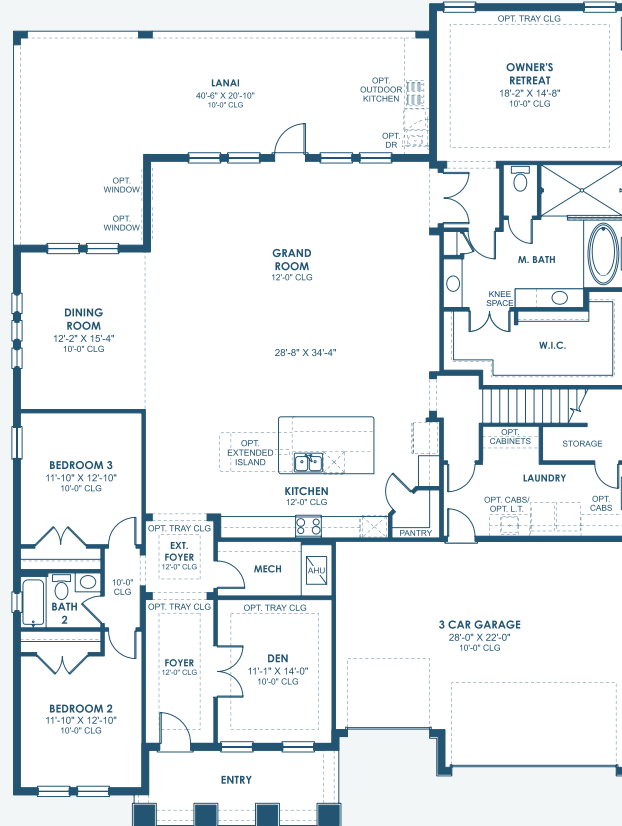
OPT. 2ND MASTER SUITE



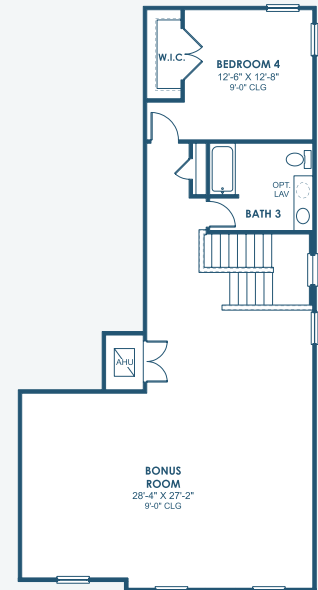
OPT. BEDROOM 6



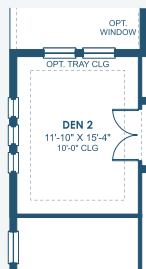
OPT. BONUS ROOM



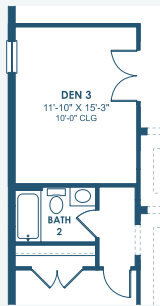
MAIN FLOOR



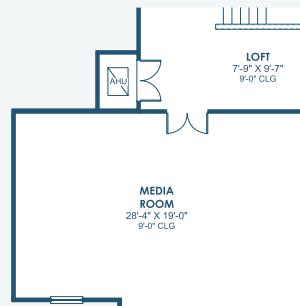
SECOND FLOOR



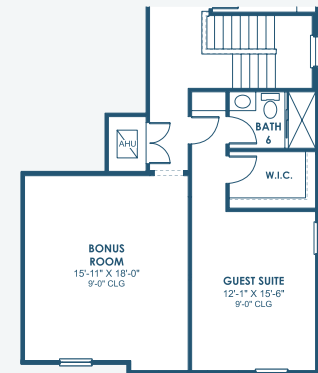
OPT. DEN 2



OPT. DEN 3



OPT. MEDIA ROOM



OPT. BONUS ROOM W/
GUEST SUITE AND BATH 6