

# Key West II

## Artisan Series

4,250-4,619 Sq.Ft. | 4-6 Bedrooms  
3-5 Baths | 3-Car Garage



Mediterranean A | FMD14



Craftsman A | CRT3



Tuscan A | TUS5



Modern | MOD3



Coastal C | COA1

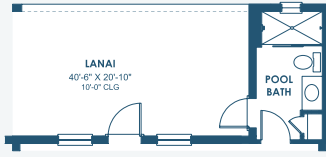


Modern Farmhouse | MFH6

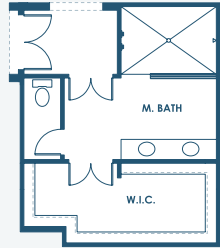
# Key West II

## Artisan Series

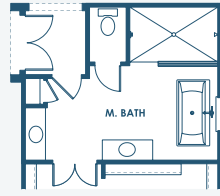
4,250-4,619 Sq.Ft. | 4-6 Bedrooms  
3-5 Baths | 3-Car Garage



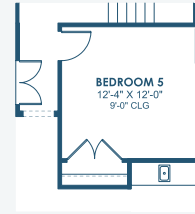
OPT. POOL BATH



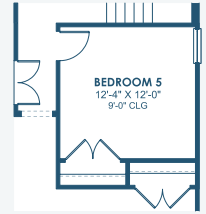
OPT. M. BATH W/  
DELUXE SHOWER



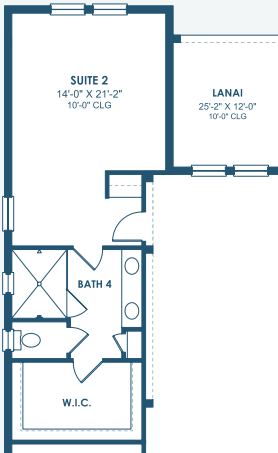
OPT. STARGAZE  
RELAXATION M. BATH



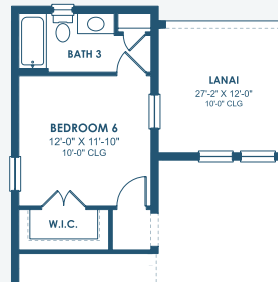
OPT. BEDROOM 5  
W/ WET BAR



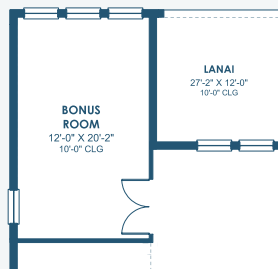
OPT. BEDROOM 5



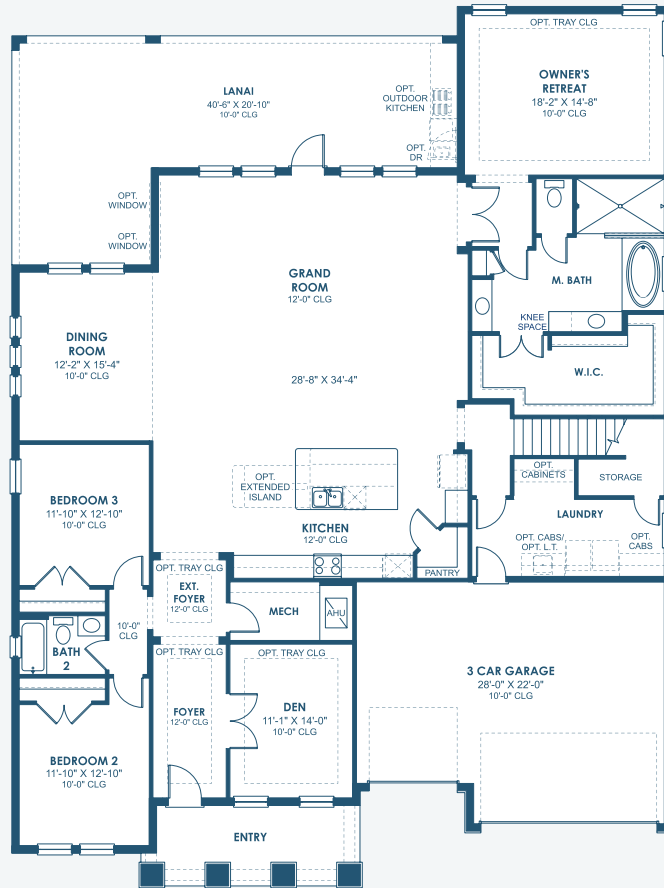
OPT. 2ND MASTER SUITE



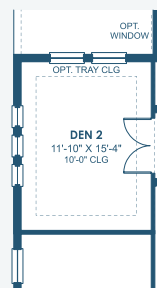
OPT. BEDROOM 6



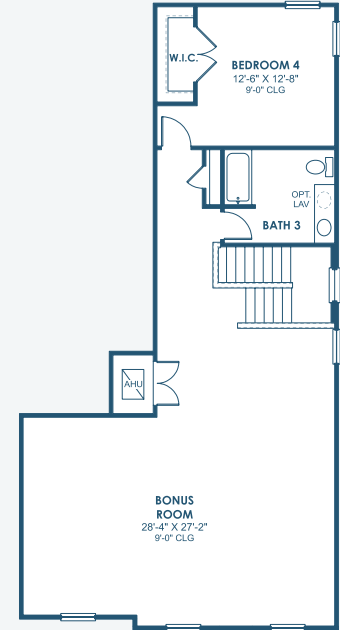
OPT. BONUS ROOM



MAIN FLOOR



OPT. DEN 2



SECOND FLOOR

\*FRONT WINDOWS, ENTRY/PORCHES AND ROOM DIMENSIONS MAY VARY PER ELEVATION\*  
\*REFERENCE MASTER PLAN SETS FOR ACTUAL SQUARE FOOTAGE TOTALS AND ENTRY LAYOUTS\*

\*Artist's conceptual rendering. Actual construction may vary in color, features and dimensions. Availability, specifications, and pricing are subject to change without notice. All plans require developer approval and may be modified in order to comply with these developer requirements. Please speak with a Homes by WestBay Community Sales Manager for current information and about options where available. © 2025 Homes by West Bay LLC, CRC #057247. All rights reserved. Not an offer to purchase where prohibited by law. Broker Participation Welcome. 031925