



Mediterranean A | FMD2



European A | EUC9

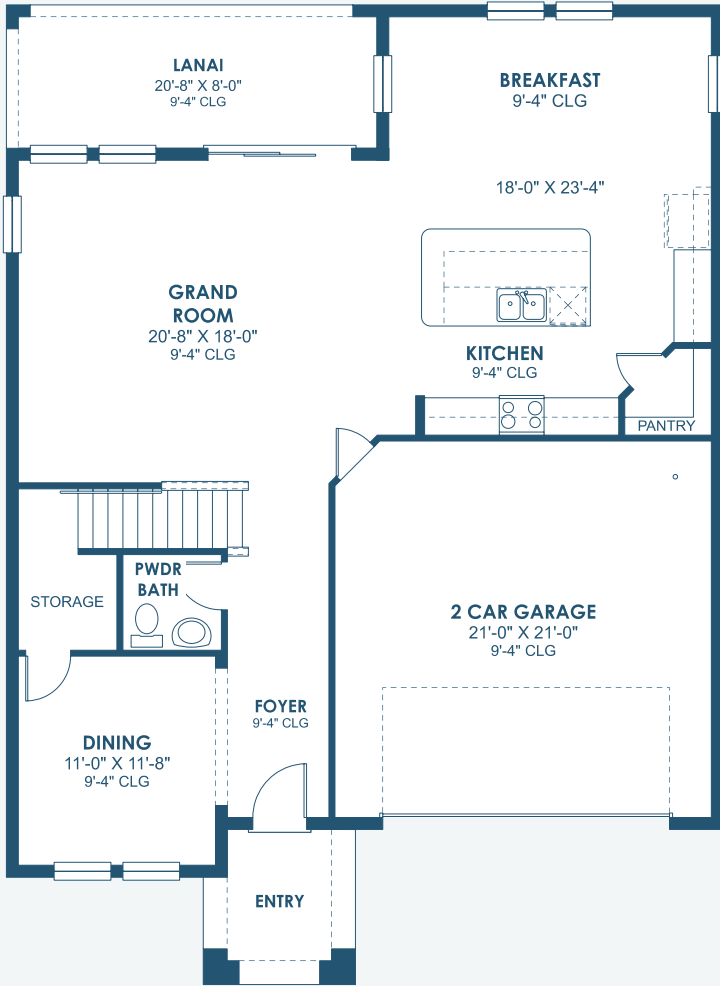


Tuscan A | TUS9

# Kingfisher

Innovation Series

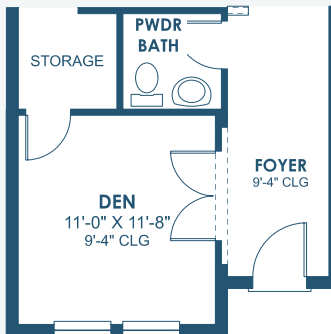
2,731 Sq.Ft. | 4 Bedrooms  
2.5 Baths | 2-Car Garage



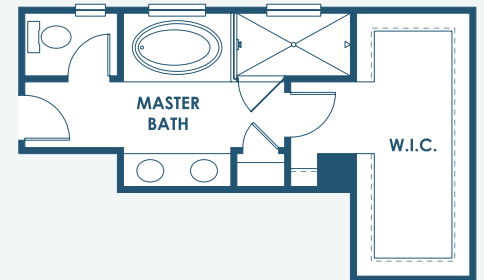
**MAIN FLOOR**



**SECOND FLOOR**



**OPT. DEN**



**ALT. MASTER BATH**