

Key Largo I

Artisan Series

3,179 Sq.Ft. | 3-4 Bedrooms
3 Baths | 3-Car Garage



Mediterranean C | FMD8



Craftsman B | CRT1



Coastal C | COA6



Modern Farmhouse | MOD3



Mediterranean E | FMD12



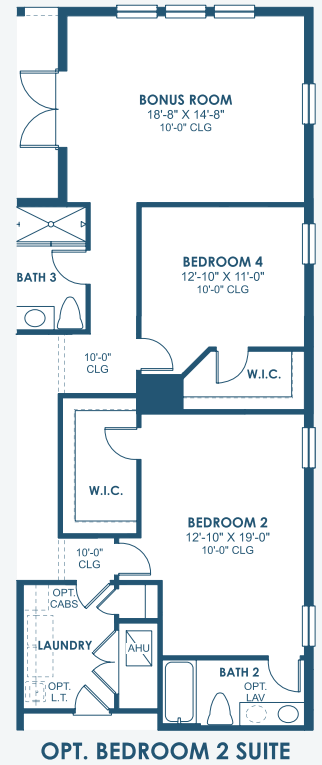
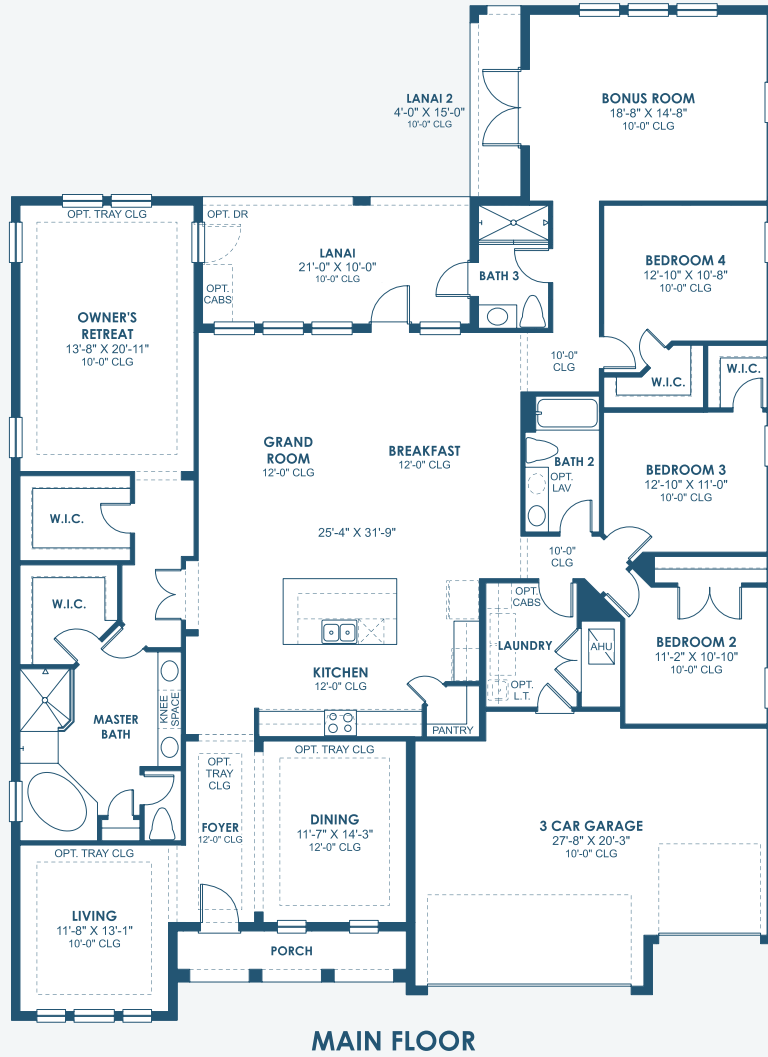
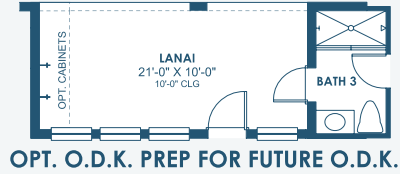
Tuscan A | TUS4



Modern | MOD6

Artisan Series

3,179 Sq.Ft. | 3-4 Bedrooms
3 Baths | 3-Car Garage



FRONT WINDOWS AND ENTRY VARY PER ELEVATION
REFERENCE MASTER PLAN SETS FOR ACTUAL SQUARE FOOTAGE TOTALS AND ENTRY LAYOUTS

Artist's conceptual rendering. Actual construction may vary in color, features and dimensions. Availability, specifications, and pricing are subject to change without notice. All plans require developer approval and may be modified in order to comply with these developer requirements. Please speak with a Homes by WestBay Community Sales Manager for current information and about options where available. © 2025 Homes by West Bay LLC, CRC #057247. All rights reserved. Not an offer to purchase where prohibited by law. Broker Participation Welcome. 031125

