

# Granada I

Artisan Series

4,846 Sq.Ft. | 5-7 Bedrooms  
5-6 Baths | 3-Car Garage



Mediterranean A | FMD10



Tuscan A | TUS10



Coastal C | COA6



Modern | MOD2



Modern Farmhouse | MFH2

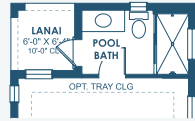
# Granada I

## Artisan Series

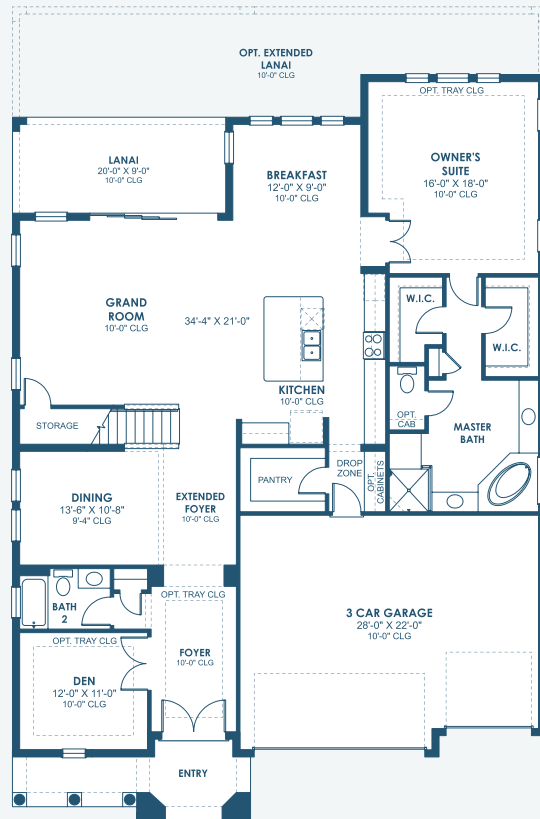
4,846 Sq.Ft. | 5-7 Bedrooms  
5-6 Baths | 3-Car Garage



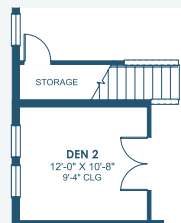
OPT. O.D.K. PREP FOR  
FUTURE O.D.K.



OPT. POOL BATH  
W/ LANAI



MAIN FLOOR



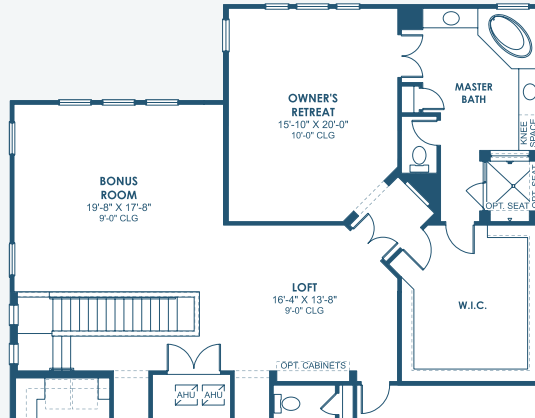
OPT. DEN 2



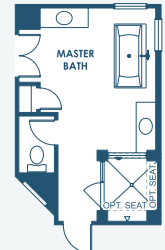
OPT. STARGAZE  
RELAXATION  
M. BATH



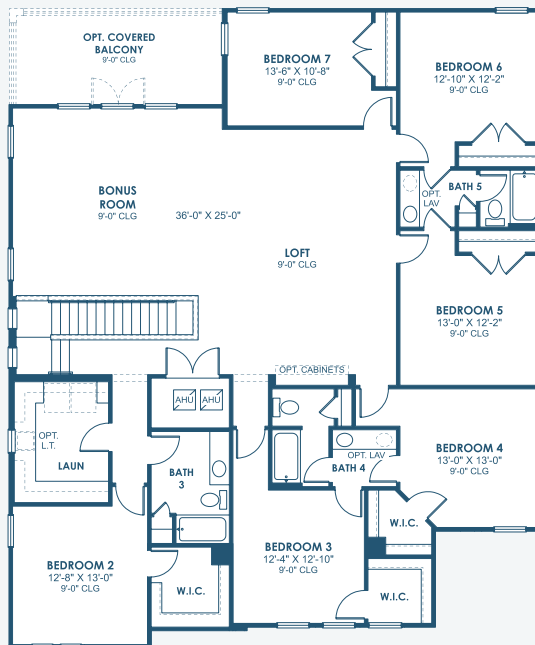
OPT. M. BATH W/  
DELUXE SHOWER



OPT. UPPER OWNER'S SUITE



OPT. UPPER OWNER'S SUITE  
W/ STARGAZE  
RELAXATION M. BATH



SECOND FLOOR