

Granada II

Artisan Series

4,828-4,900 Sq.Ft. | 5 Bedrooms
4-6 Baths | 3-Car Garage



Mediterranean A | FMD5



European A | EUC4



Tuscan A | TUS4



Coastal C | COA12

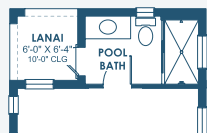


Modern Farmhouse | MFH7

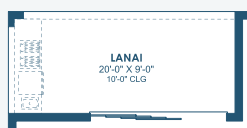
Granada II

Artisan Series

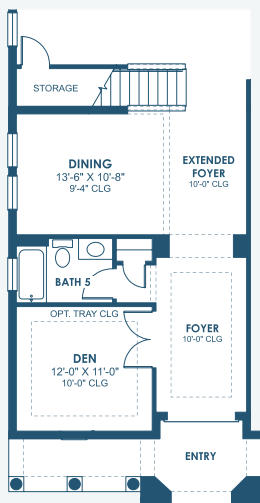
4,828-4,900 Sq.Ft. | 5 Bedrooms
4-6 Baths | 3-Car Garage



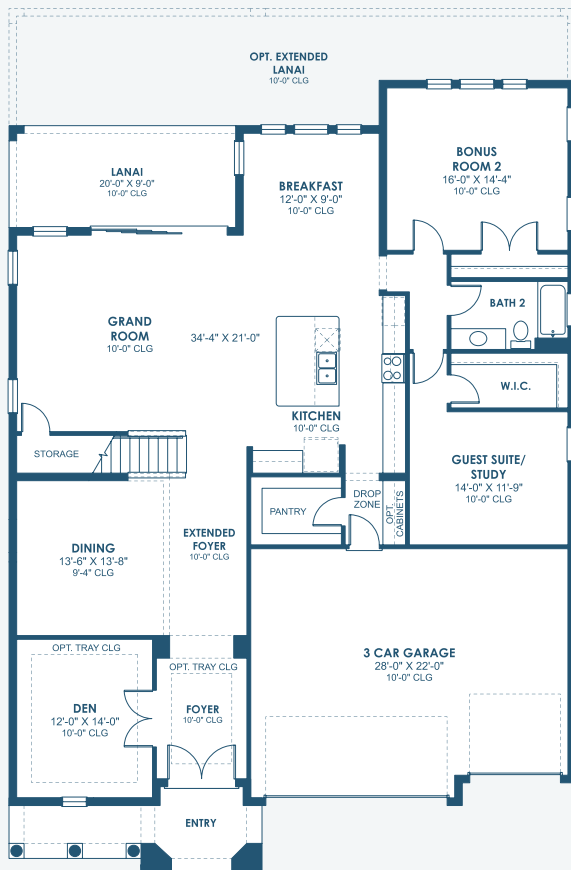
OPT. POOL BATH
W/ LANAI



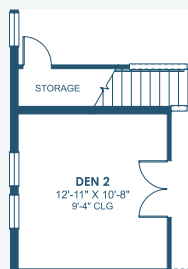
OPT. O.D.K. PREP FOR
FUTURE O.D.K.



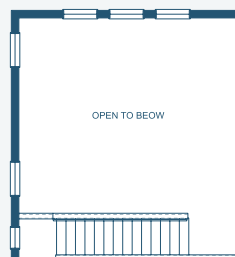
OPT. BATH 5



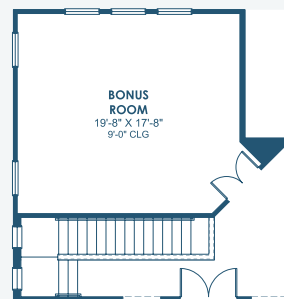
MAIN FLOOR



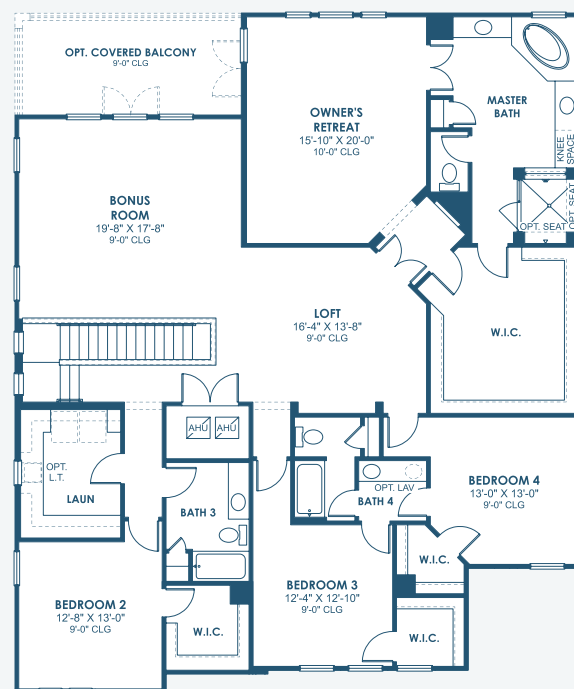
OPT. DEN 2



OPT. OPEN TO BELOW



OPT. BONUS ROOM



SECOND FLOOR



OPT. M. BATH W/
DELUXE SHOWER



OPT. STARGAZE
RELAXATION M. BATH



OPT. ZEN
RELAXATION
M. BATH