

Granada II

Artisan Series

4,828-4,900 Sq.Ft. | 5 Bedrooms
4-6 Baths | 3-Car Garage



Mediterranean A | FMD5



European A | EUC4



Tuscan A | TUS4



Coastal A | COA1



Coastal B | COA7

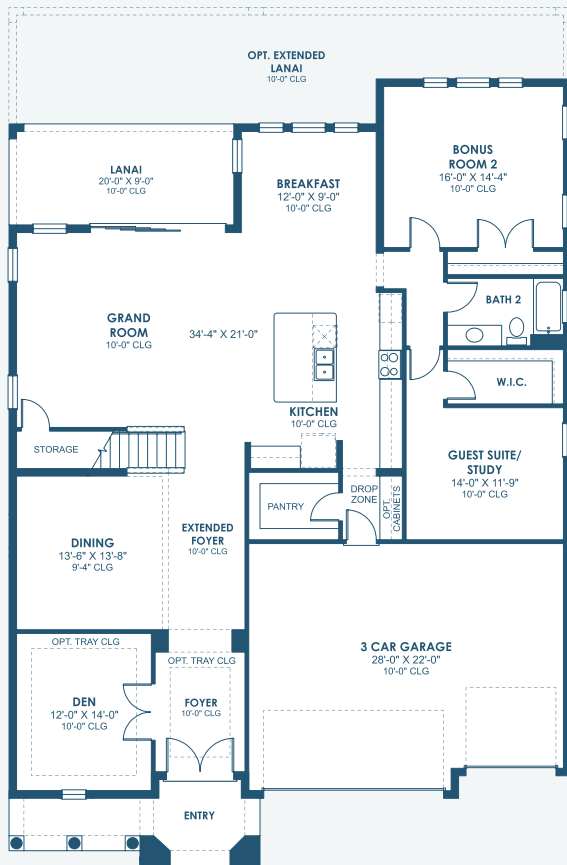


Coastal C | COA12

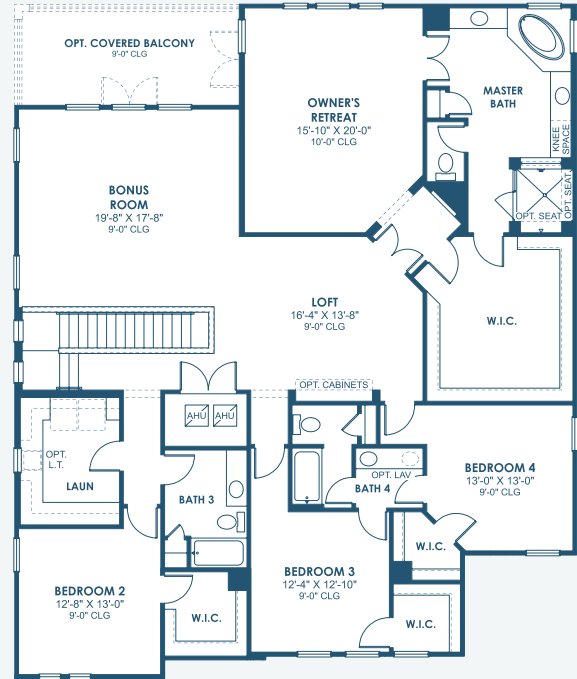
Granada II

Artisan Series

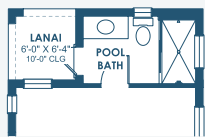
4,828-4,900 Sq.Ft. | 5 Bedrooms
4-6 Baths | 3-Car Garage



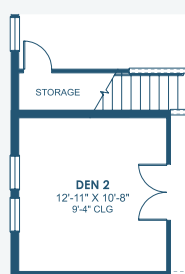
MAIN FLOOR



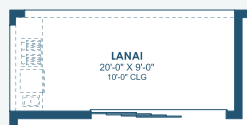
SECOND FLOOR



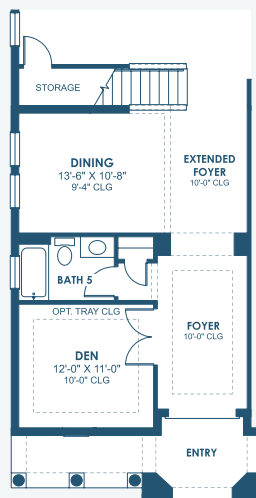
OPT. POOL BATH W/ LANAI



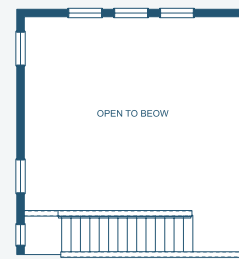
OPT. DEN 2



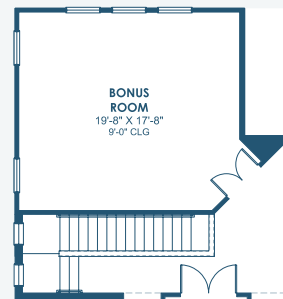
OPT. O.D.K. PREP FOR FUTURE O.D.K.



OPT. BATH 5



OPT. OPEN TO BELOW



OPT. BONUS ROOM



OPT. STARGAZE RELAXATION M. BATH



OPT. M. BATH W/ DELUXE SHOWER