

Biscayne Grand

Artisan Series

3,347-3,490 Sq.Ft. | 4-6 Bedrooms
4-5 Baths | 3-Car Garage



Craftsman A | CRT1

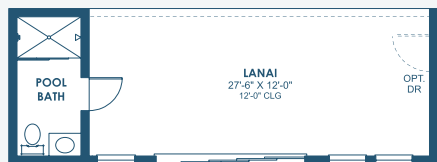


Mediterranean A | FMD5

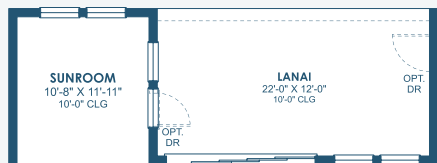
Biscayne Grand

Artisan Series

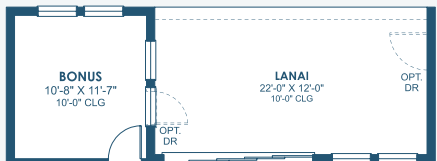
3,347-3,490 Sq.Ft. | 4-6 Bedrooms
4-5 Baths | 3-Car Garage



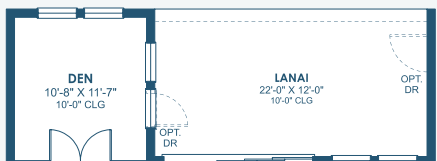
OPT. POOL BATH



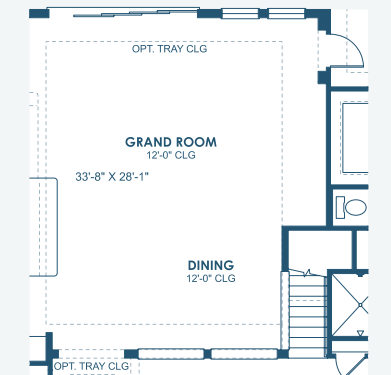
OPT. SUNROOM



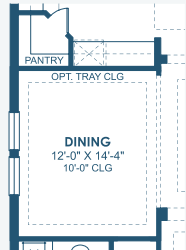
OPT. BONUS ROOM



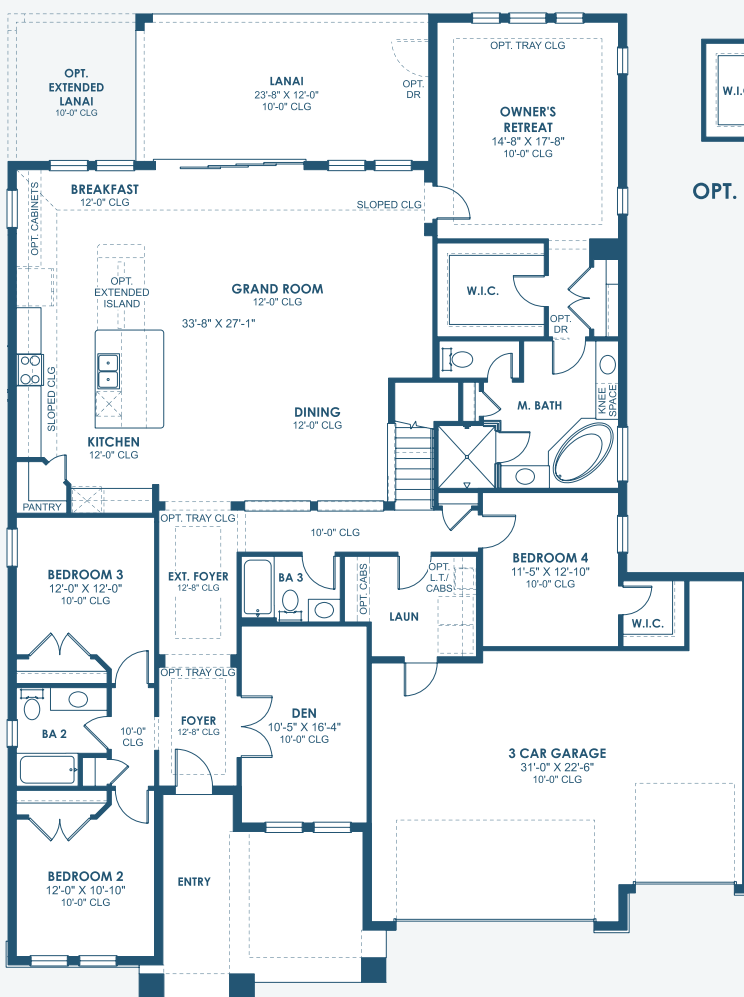
OPT. DEN



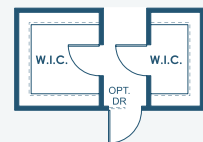
OPT. TRAY CEILING AT GRAND ROOM



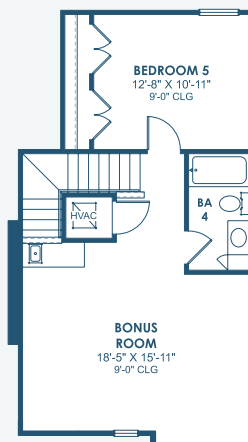
OPT. DINING ROOM



MAIN FLOOR



OPT. OWNER'S W.I.C.



SECOND FLOOR