



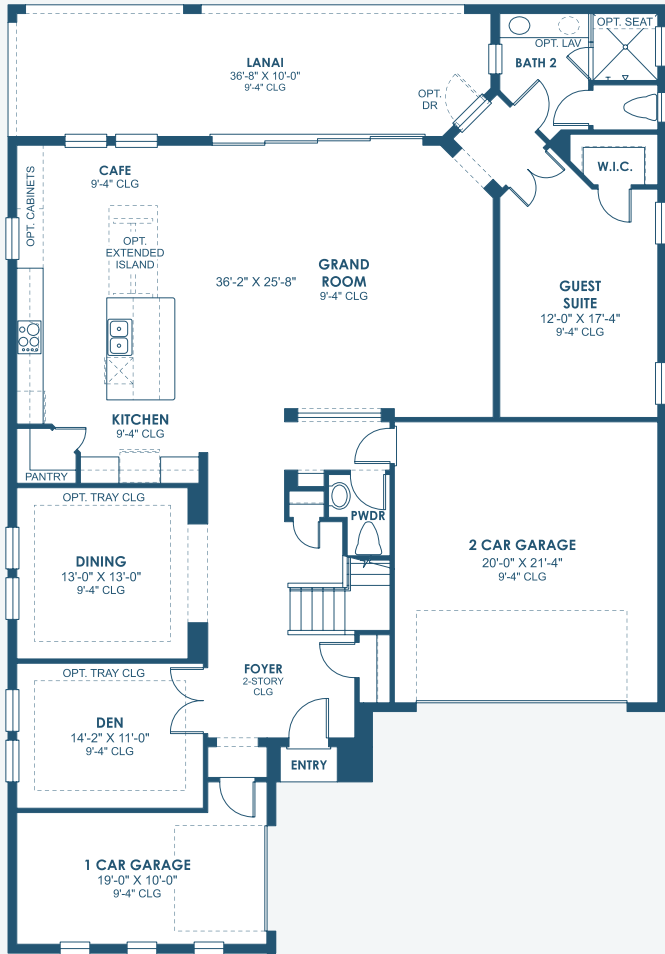
Mediterranean A | FMD5



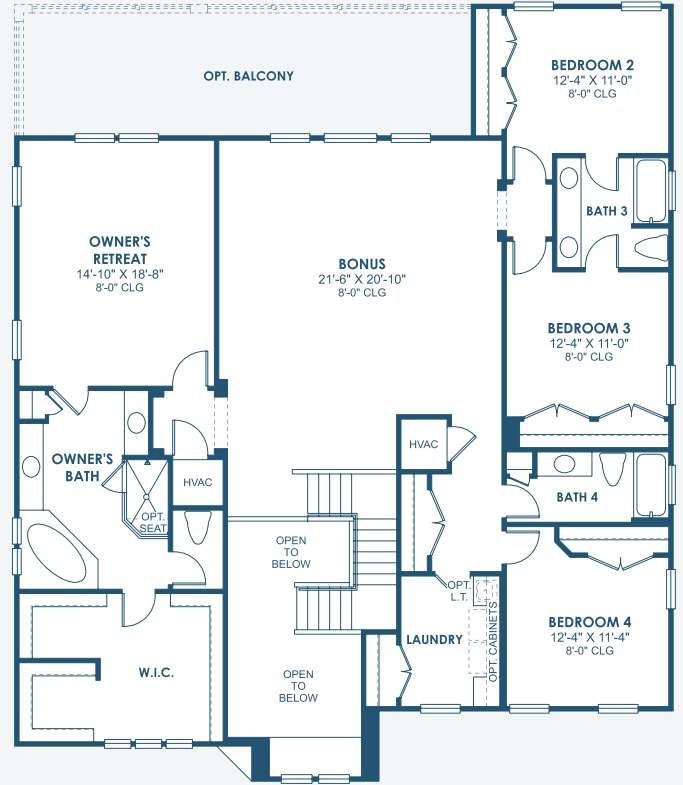
European A | EUC6



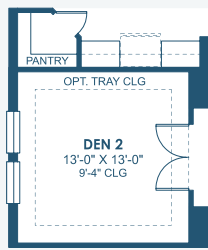
Tuscan A | TUS2



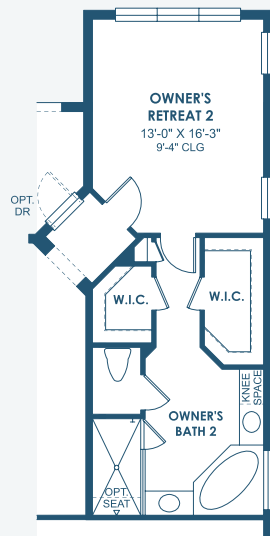
MAIN FLOOR



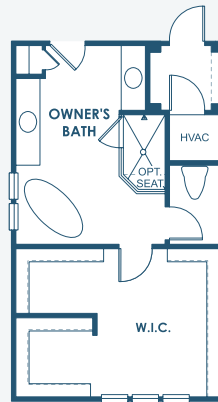
SECOND FLOOR



OPT. DEN 2



OPT. OWNER'S RETREAT 2



OPT. OWNER'S BATH

FRONT WINDOWS, ENTRY/PORCHES AND ROOM DIMENSIONS MAY VARY PER ELEVATION
REFERENCE MASTER PLAN SETS FOR ACTUAL SQUARE FOOTAGE TOTALS AND ENTRY LAYOUTS

*Artist's conceptual rendering. Actual construction may vary in color, features and dimensions. Availability, specifications, and pricing are subject to change without notice. All plans require developer approval and may be modified in order to comply with these developer requirements. Please speak with a Homes by WestBay Community Sales Manager for current information and about options where available. © 2024 Homes by West Bay LLC, CRC #057247. All rights reserved. Not an offer to purchase where prohibited by law. Broker Participation Welcome. 092424