

Sandpiper

Innovation Series

2,101-2,135 Sq.Ft. | 2-4 Bedrooms
2-3 Baths | 2-Car Garage



Mediterranean A | FMD9



European A | EUC4

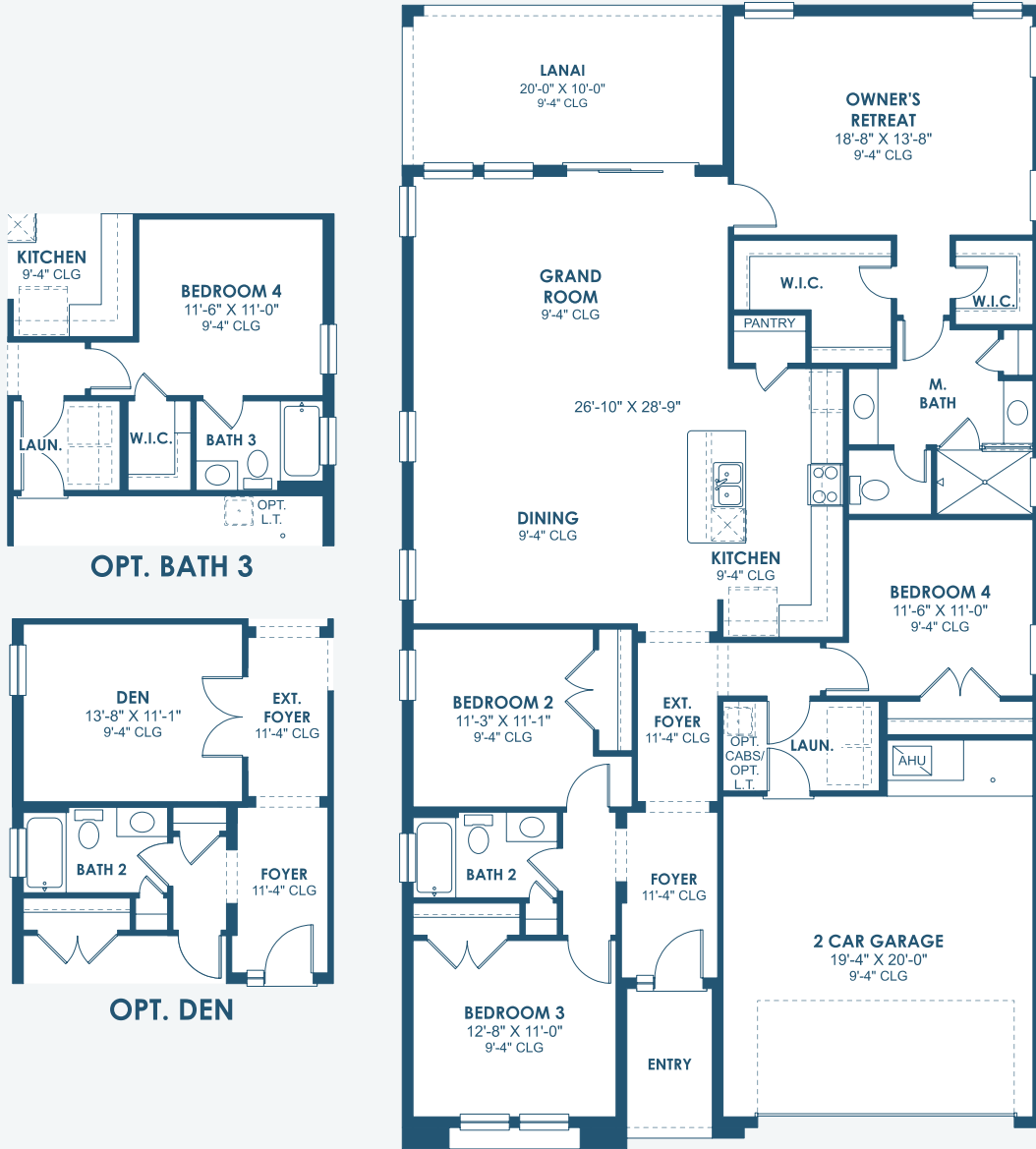


Tuscan A | TUS1

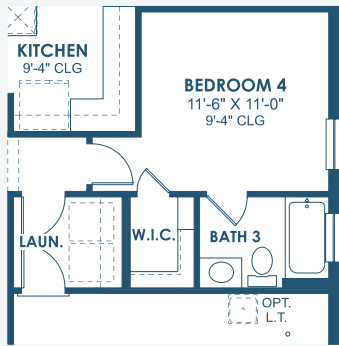
Sandpiper

Innovation Series

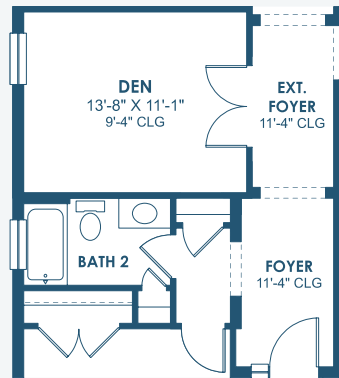
2,101-2,135 Sq.Ft. | 2-4 Bedrooms
2-3 Baths | 2-Car Garage



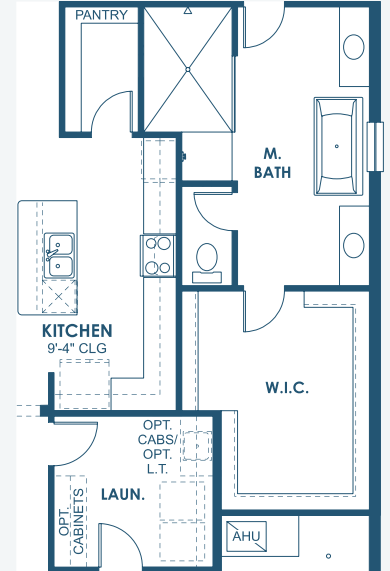
MAIN FLOOR



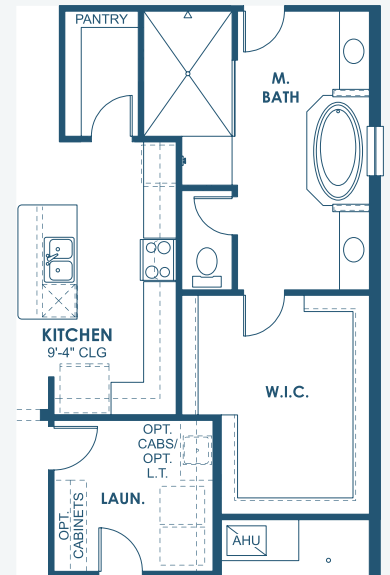
OPT. BATH 3



OPT. DEN



**OPT. LUXURY MASTER BATH
W/ FREESTANDING TUB
AND EXPANDED CLOSET**



**OPT. LUXURY MASTER BATH
W/ EXPANDED CLOSET**