

Key Largo II

Artisan Series

3,560-3,900 Sq.Ft. | 4-5 Bedrooms
4 Baths | 3-Car Garage



Mediterranean C | FMD3



Mediterranean E | FMD1



Craftsman B | CRT4



European A | EUC4

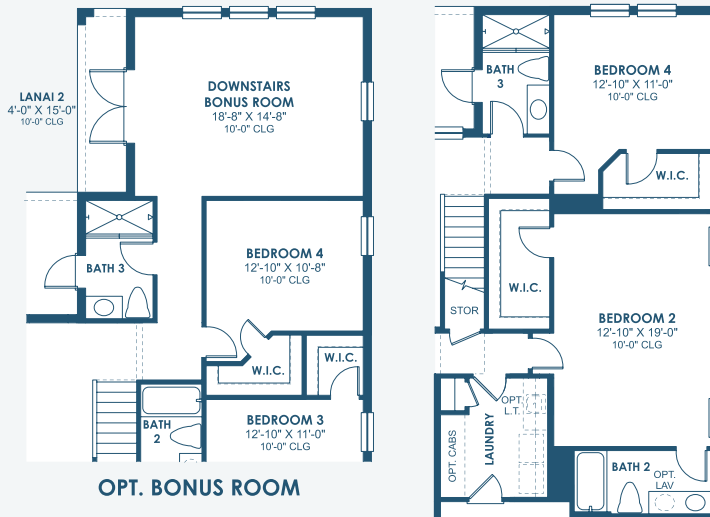


Tuscan A | TUS5

Key Largo II

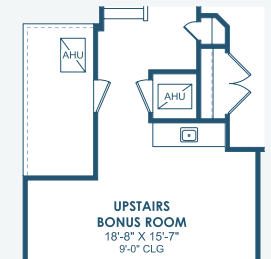
Artisan Series

3,560-3,900 Sq.Ft. | 4-5 Bedrooms
4 Baths | 3-Car Garage

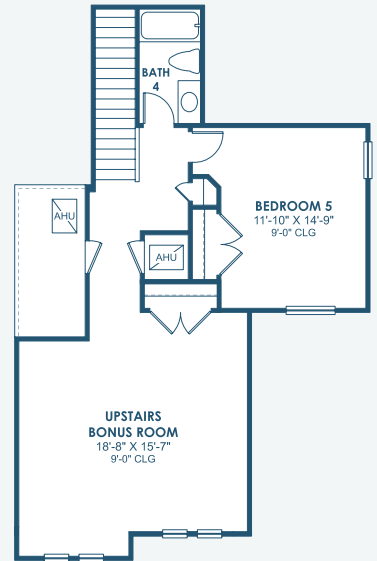


OPT. BONUS ROOM

OPT. BEDROOM 2 SUITE



OPT. WET BAR ILO CLOSET



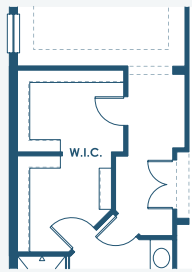
SECOND FLOOR



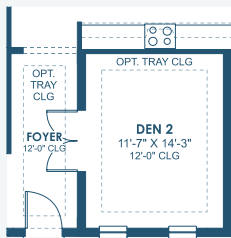
MAIN FLOOR



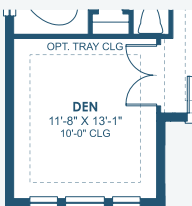
OPT. STARGAZE RELAXATION MASTER BATHROOM



OPT. OWNER'S W.I.C.



OPT. DEN 2



OPT. DEN

FRONT WINDOWS AND ENTRY VARY PER ELEVATION
REFERENCE MASTER PLAN SETS FOR ACTUAL SQUARE FOOTAGE TOTALS AND ENTRY LAYOUTS

*Artist's conceptual rendering. Actual construction may vary in color, features and dimensions. Availability, specifications, and pricing are subject to change without notice. All plans require developer approval and may be modified in order to comply with these developer requirements. Please speak with a Homes by WestBay Community Sales Manager for current information and about options where available. © 2024 Homes by West Bay LLC, CRC #057247. All rights reserved. Not an offer to purchase where prohibited by law. Broker Participation Welcome. 071224