

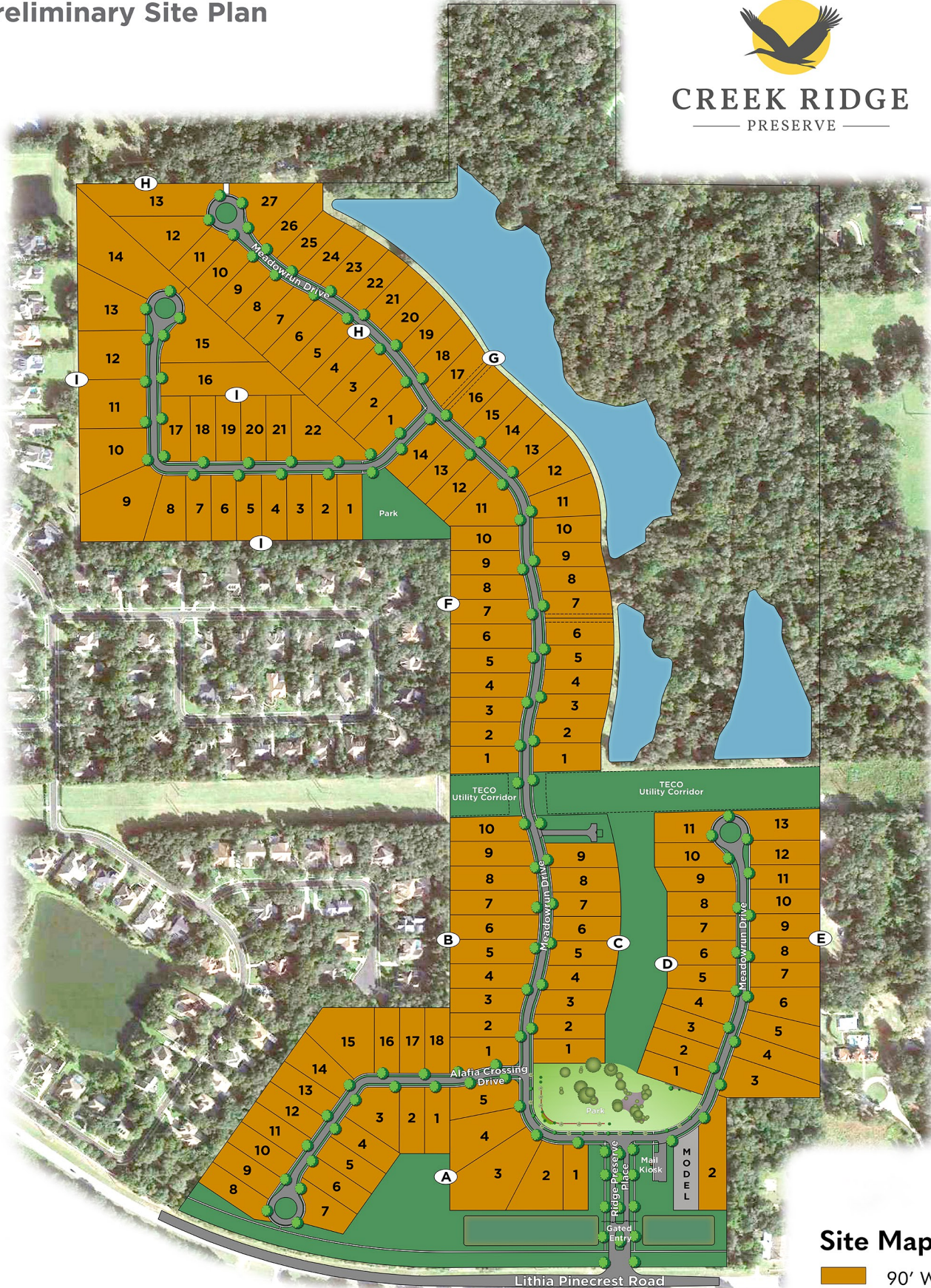
# CREEK RIDGE PRESERVE

# Site Map

## Preliminary Site Plan



**CREEK RIDGE**  
PRESERVE



### Site Map Legend

 90' Wide Homesite

← To Bloomingdale Ave, US-60, US-301 & I-75



Site Plans, availability, specifications, pricing, and common areas are subject to change without notice. This is an artist's conceptual rendering. Home sites may be released in phases. Refer to a recorded plat for additional information. Please speak with a Homes by WestBay Community Sales Manager for current information. © 2025 Homes by West Bay LLC. All Rights Reserved. Not an offer to purchase where prohibited by law. Broker Participation Welcome. 01072025



CRC# 057247